

# Type KA

## Lined bottom outlet valve

- self-lubricating and maintenance-free
- cavity minimized
- short pattern

DN 15 - 200 / PN 10 - 25  
NPS ½ - 8 / Class 150

Range of application:  
-10 < T < 150/210°C

### Design characteristics

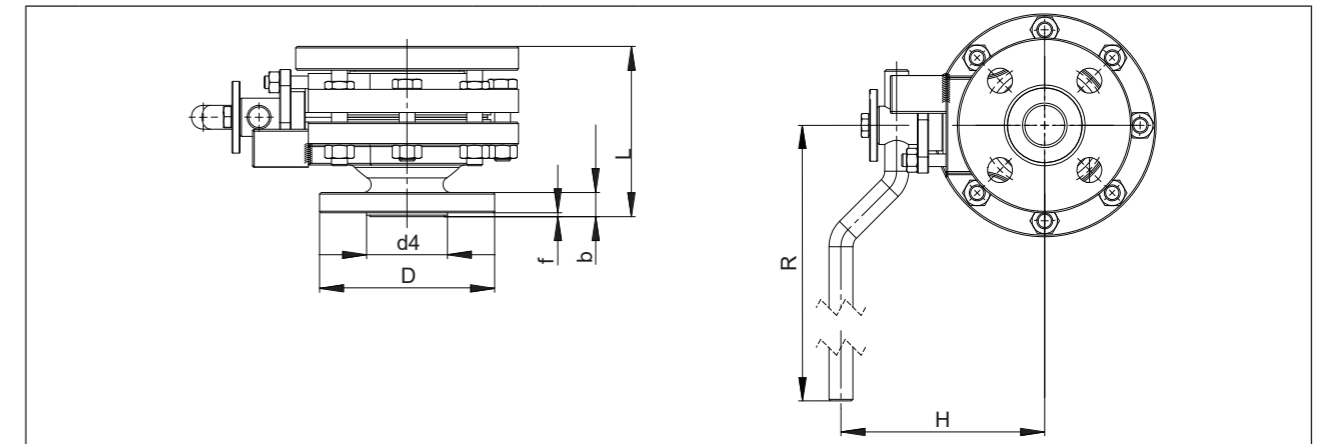
- vacuum-capable
- completely PFA / FEP lined
- high corrosion-resistance of aggressive media
- full bore design
- conditioned by the design, no remaining quantity of crystalline or polymeric media remains in the vessel
- body material Carbon Steel 1.0619, ASTM A216 WCB

### Options

- flattened ball design "F"
- other materials

# Type KA

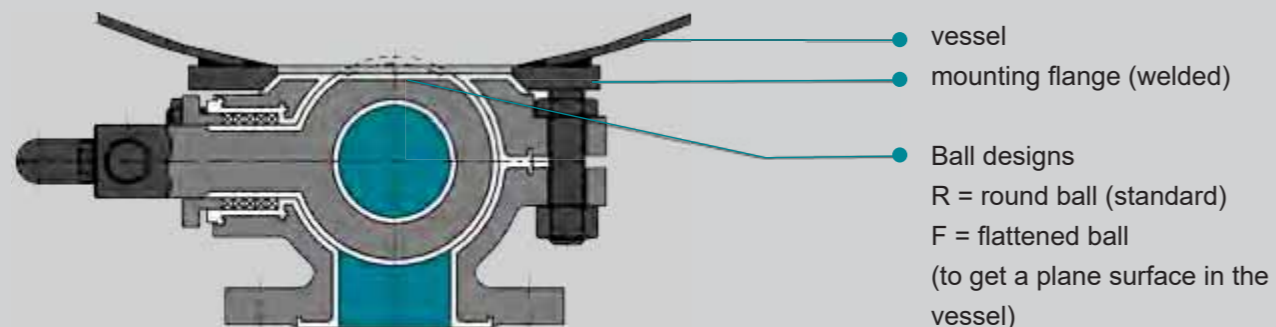
## Technical information



	DN	PN	D [mm]	flange holes		b [mm]	f [mm]	d4 [mm]	L [mm]	R [mm]	H [mm]	weight [kg]	
				øk [mm]	No.								
EN 588	25	10-40	140	120	4	14	18	2	78	87,5 <sup>1)</sup>	150	132	*
	40	10-40	180	140	4	18	18	2	90	110 <sup>1)</sup>	250	143	*
	50	10-40	195	155	4	18	20	3	106	122 <sup>1)</sup>	250	160	*
	80	10-40	220	195	4	18	24	3	140	142 <sup>1)</sup>	300	205	*
	100	10-40	250	230	8	18	20	3	140	160 <sup>1)</sup>	350	220	*
	150	10-16	360	310	8	22	22	3	*4)	*4)	*4)	*	
	NPS	Class	D [mm]	flange holes		b [mm]	f [mm]	d4 [mm]	L [mm]	R [mm]	H [mm]	weight [kg]	
				øk [mm]	No.								
ASME B16.10	1	150	140	79,2	4	15,7	14,2	1,6	50,8	87,5 <sup>1)</sup>	200	132	*
	1½	150	180	98,6	4	15,7	17,5	1,6	73,2	110 <sup>1)</sup>	320	143	*
	2	150	195	120,7	4	19,1	19,1	1,6	91,9	122 <sup>1)</sup>	420	160	*
	3	150	220	152,4	4	19,1	23,9	1,6	127	142 <sup>1)</sup>	600	205	*
	4	150	250	190,5	8	19,1	23,9	1,6	157,2	160 <sup>1)</sup>	600	220	*
	6	150	360	241,3	8	22,4	25,4	1,6	215,9	*4)	*4)	*4)	*

\*1) on request

Some designs, sizes and/or configurations may be fitted with threaded flange holes.



**Order Example: KA-F-2-A-DN80-PN16-EN-GJS-400-18-LT-PFA**

KA = type, F = flange, 2 = two-way, A = lined, DN80 = size, PN16 = pressure rating, WCB = body material, PFA = lining material