

AZ Ball valves cavity minimized, vacuum-capable

Type NVN-EXTRA

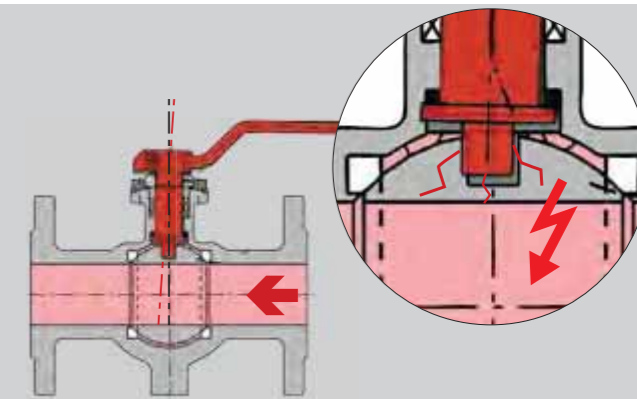
- split body design
- cavity minimized



Technical comparison

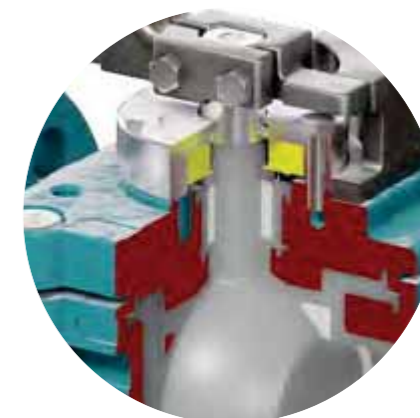
Split body ball valve with split ball and shaft

- increase of torque due to one sided pressure when ball is floating
- wear and tear between ball and shaft
- clearance ball / stem



Sealing systems

- adjustable triple packing (sealing system CAS)
- disc springs for initial tension of packing "live-loaded" (sealing system CAS-SL)



one-piece ball plug

- anti blow-out design in case of high pressure or dismantlement
- no risk of wear and tear between ball and shaft
- no danger for the lining
- constant torque
- optional: precise control with linear or equal percentage characteristics (type RH)
- customized solutions



safe lining

- chemical resistant PFA/FEP lining
- minimum 3mm FEP/PFA lining
- locked in lining
- suitable for toxic and aggressive chemicals

Standard materials

Body:

- Stainless Steel 1.4408 / A351/CF8M
- Ductile Iron EN-GJS-400-18 / ASTM A395 (DN ≥ 8")
- Carbon Steel 1.0619 / ASTM A216 WCB

Ball:

- ASTM A995 - CD4MCUN (DN ≤ 4")
- Carbon Steel 1.0619 / ASTM A216 WCB (DN ≥ 6")

other types

Type NEO-VAL

- split body design (short face to face dimensions)



Type KA

- split body design
- vessel bottom outlet valve



Type Monobloc

- one-piece body design (top entry)



Type MONOBLOC / MONOBLOC-EXTRA

Fully lined ball valve, one piece body design

- cavity minimized design
- one-piece body
- one-piece ball

DN 25 - 200 / PN 10-25
NPS 1 - 8 / Class 150

Range of application:
-10 < T < 150/210°C

Type MONOBLOC-EXTRA

- full bore design
- maximum flow rates - no pressure loss

Design characteristics

- top entry design
- easy inline replacement
- chemical resistance
- adjustable stem packing
- reduced cavity between ball and body
- PFA / FEP lining of body, ball and cover

Options

- other materials

Type MONOBLOC

- reduced bore
- less torque = smaller actuation

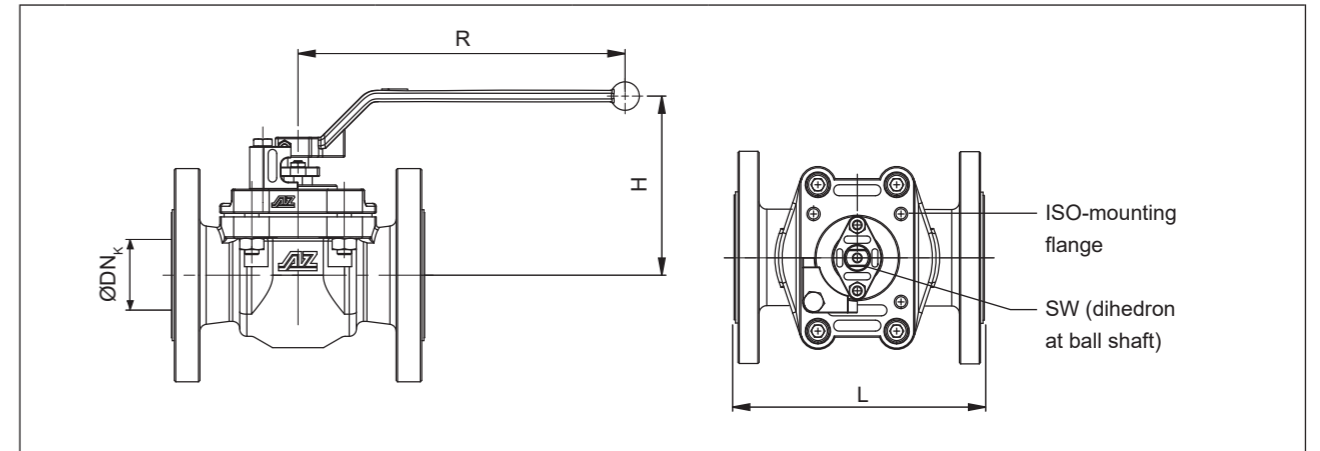
Top entry design

- fast exchange of sealings and ball with repair kit
- no disassembling of the complete valve in case of service
- flange sealings remain
- final inline leak test for the whole piping system



Type MONOBLOC / MONOBLOC-EXTRA

Technical information



		Type MONOBLOC-EXTRA										
EN 558	DN	PN	L [mm]	R [mm]	H [mm]	ISO-5211 flange	SW [mm]	torque* [Nm]	weight [kg]	K _{vs} value [m³/h]	C _v value [US.gal/min]	
		25	16	160	230	119	F07	11	45	**	70	81
	40	16	200	230	126	F07	11	45	**	193	223	
	50	10-16	230	320	143	F10	14	50	**	323	374	
	80	10-16	310	600	199	F12	22	120	**	947	1095	
	100	10-16	350	600	202	F14	22	120	**	1446	1672	
	150	10-16	350	600	227	F16	27	160	**	3338	3859	
	200	10-16	400	600	277	F16	27	270	**	6362	7356	
ASME B16.10	NPS	Class	L [mm]	R [mm]	H [mm]	ISO-5211 flange	SW [mm]	torque* [Nm]	weight [kg]	K _{vs} value [m³/h]	C _v value [US.gal/min]	
		1	150	160	230	119	F07	11	45	**	70	81
	1½	150	200	230	126	F07	11	45	**	193	223	
	2	150	230	320	143	F10	14	50	**	323	374	
	3	150	310	600	199	F12	22	120	**	947	1095	
	4	150	350	600	202	F14	22	120	**	1446	1672	
	6	150	350	600	227	F16	27	160	**	3338	3859	
	8	150	400	600	277	F16	27	270	**	6362	7356	

		Type MONOBLOC										
EN 1558	DN	ØDNK	PN	L [mm]	R [mm]	H [mm]	ISO-5211 flange	SW [mm]	torque* [Nm]	weight [kg]	K _{vs} value [m³/h]	
		50	40	10-16	230	170	128	F07	11	45	**	**
	80	50	10-16	310	230	143	F10	14	50	**	**	
	100	80	10-16	350	320	174	F12	19	120	**	**	
	150	100	10-16	350	420	200	F14	22	120	**	**	
	200	150	10-16	457	530	250	F16	27	160	**	**	
ASME B16.10	NPS	ØDNK	Class	L [mm]	R [mm]	H [mm]	ISO-5211 flange	SW [mm]	torque* [Nm]	weight [kg]	K _{vs} value [m³/h]	
		2	40	150	178	170	128	F07	11	45	**	**
	3	50	150	203	230	143	F10	14	50	**	**	
	4	80	150	229	320	174	F12	19	120	**	**	
	6	100	150	267	420	200	F14	22	120	**	**	
	8	150	150	292	530	250	F16	27	160	**	**	

*) Δp=10 bar, recommended safety factor for actuator: +40 %

**) on request

Some designs, sizes and/or configurations may be fitted with threaded flange holes.

Order example: F-2-MONOBLOC-EXTRA-DN50-PN40-1.0619.3-PFA/PFA

F = flange, 2 = two-way, MONOBLOC-EXTRA = ball valve type, DN50 = size, PN40 = rating, 1.0619 = body material, PFA/PFA = lining body/ball