

# Type SAVAs

## Cross-over combinations for safety valves

- safe exchange of safety valves
- backstop of the vessel during cross-over action
- 100% safety during continuous operation

DN 25E - 600E / PN 10 - 100  
NPS 1E - 24E / Class 150 - 600

### Design characteristics

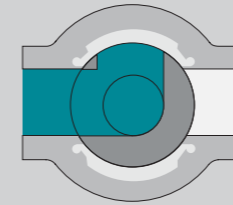
- full-flow, round bore
- sealing surfaces permanently protected
- reliable and tight for years
- tight during the exchange of safety valves
- safe backflow of blow-off capacity
- a minimal flow (protection of the vessel) is always given

# Safe exchange of safety valves during plant operation

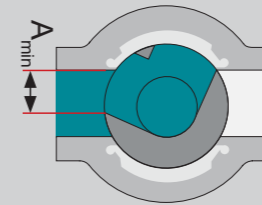


### Principle of the transflow plug

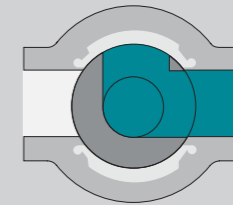
Position safety valve I



Cross-over phase  
(least cross section  $A_{min}$  is guaranteed)



Position safety valve II



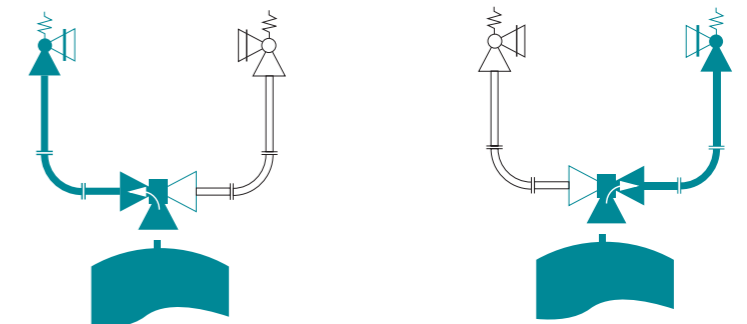
### Least cross section $A_{min}$ during the cross-over phase

- full round bore
- minimal turbulence
- good drag coefficient (zeta value)
- minimum opening cross section before safety valve



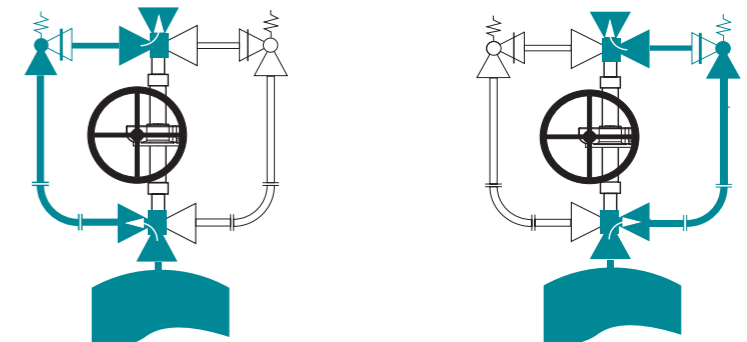
### Type SAVAs-F

Cross-over single valve without backflow of blow-off capacity, ventilation to atmosphere



### Type SAVAs-R

Cross-over combination with backflow of blow-off capacity back to the system



### Type SAVAs-R

Example: with backflow of blow-off capacity, flange connections, gearbox



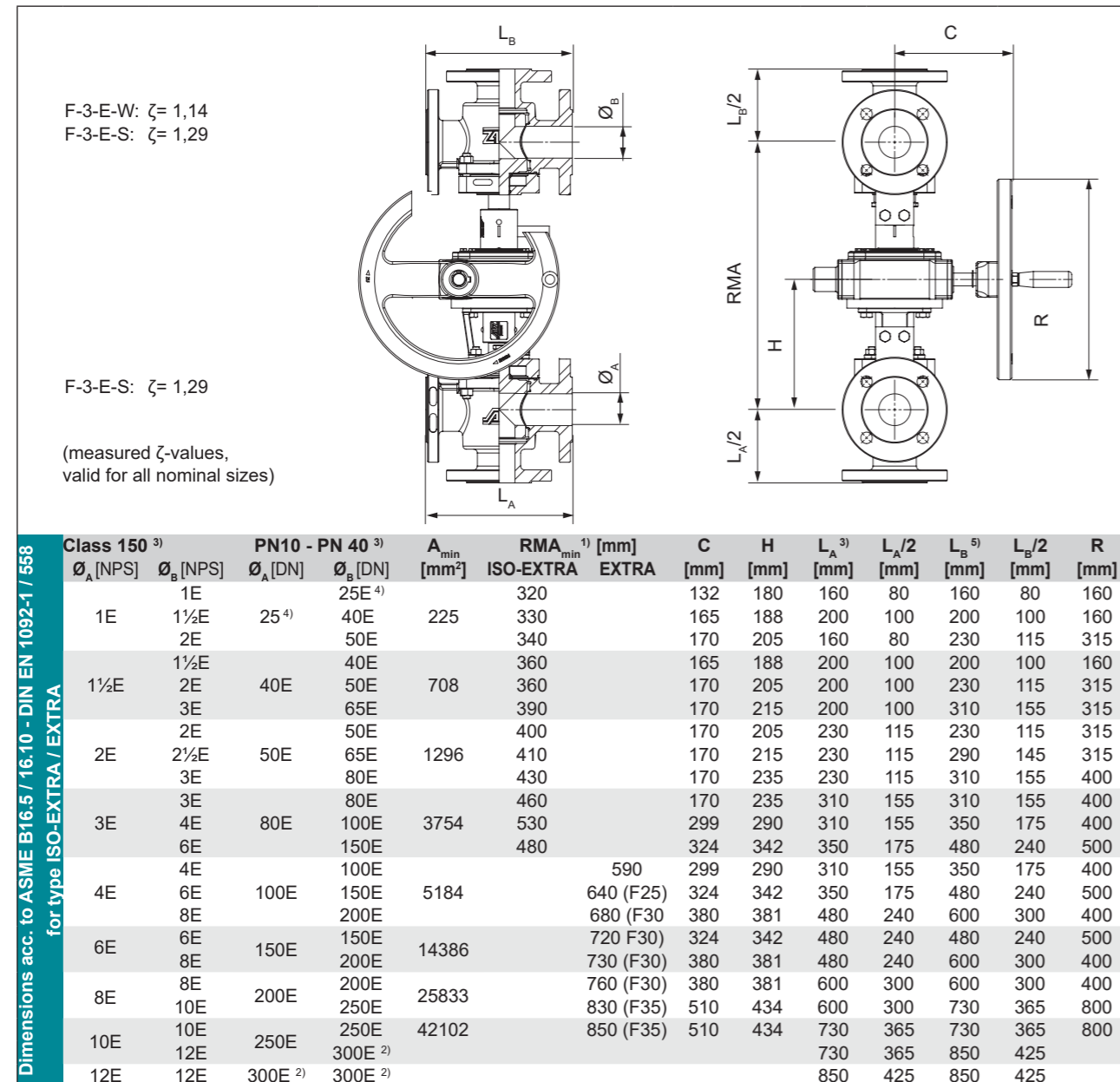
### Type SAVAs-F

Example: without backflow of blow-off capacity, with plug stem extension (T-wrench), female resp. male threads



# Type SAVA

## Technical information



1) larger pipe centre line (RMA) on request  
 2) All details for PN10 - PN 40 and Class 150, higher sizes or ratings on request  
 3) Flanges acc. to ASME, Class 300/600 or others on request  
 4) also available with T-wrench  
 5) F/F dimension acc. to DIN 3202 / EN 558-1

Order Example: SAVA-R- F-3-S- Extra-1.4408-DN 80-PN63-Inlet  
 F-3-W-Extra-1.4408-DN100-PN40-Outlet

SAVA-R = with backflow, F = flange, 3 = three-way, S = vertical, W = horizontal,  
 Extra = full bore, 1.4408 = material, DN80/DN100 = size, PN63/PN40 = rating

