

- “double block & bleed” with only one valve
- inline bleed inspection
- reliable and tight

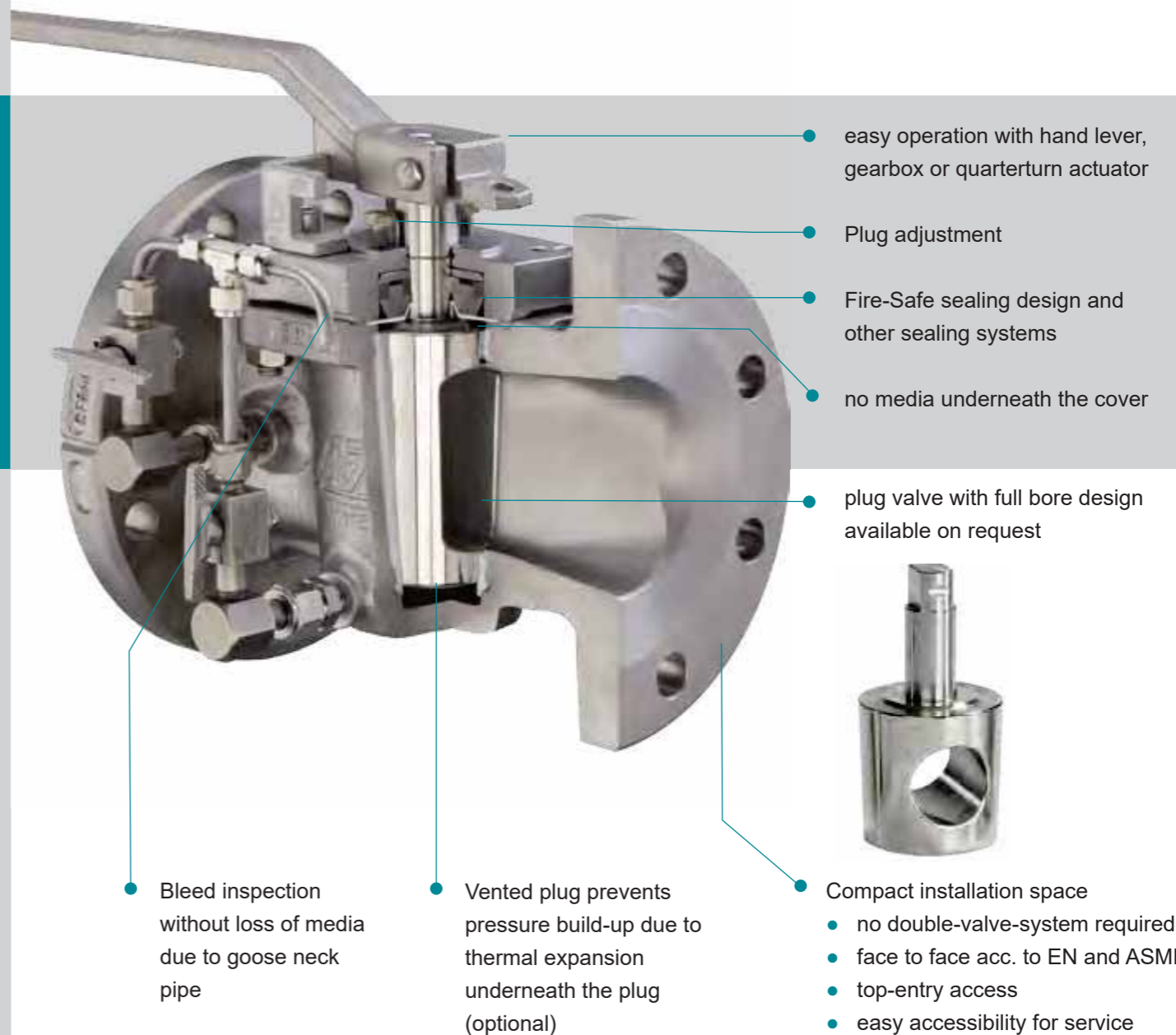
DN 15 - 600 / PN 10 - 100
 NPS ½ - 24 / Class 150 - 600
 Range of application:
 -60 < T < 230/280°C
 vacuum-capable

Design characteristics

- functionality DIB (double isolation and bleed) acc. to API 6D
- with bleed connection
- suitable for critical service
- adjustable plug in case of leakage
- simple and favourable automation
- Fire-Safe - API 607 / ISO 10497 (externally)
- low emission rate according- TA-Luft (ISO 15848) and EPA 21
- long durability

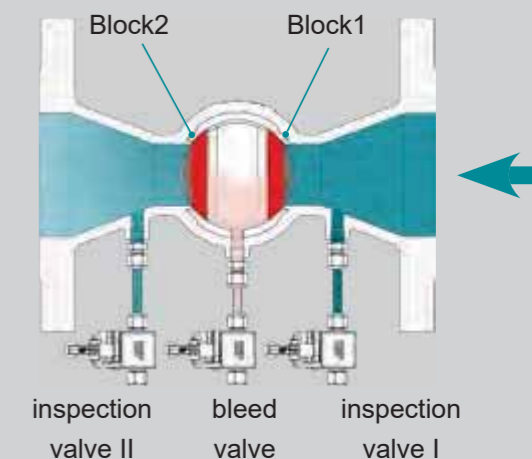
Options

- vented plug
- customer-specific positioning of the test connections
- automatic thermal relief
- inspection valves



Operation Principle

- AZ plug valve with two self-sealing elements Block 1 and Block 2
- closing of the plug valve, sealing of Block 1 and Block 2
- opening of the bleed valve for tightness-testing
- inspection and revision-services with inspection valves I+II



Type DBI

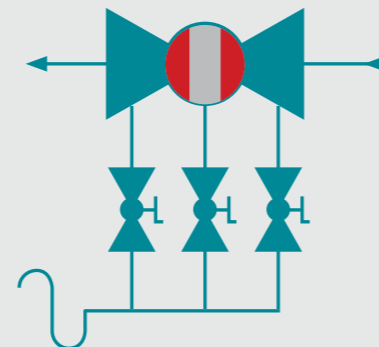
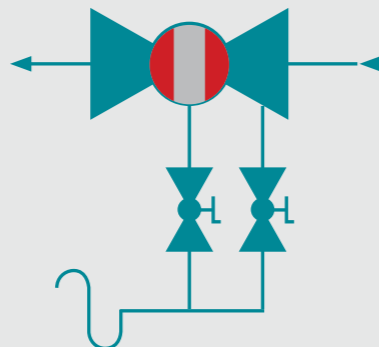
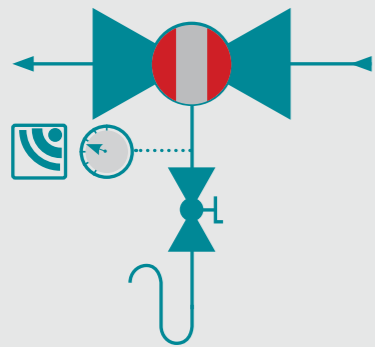
Type overview



Type DBI-B

Type DBI-B&I

Type DBI-B&2I



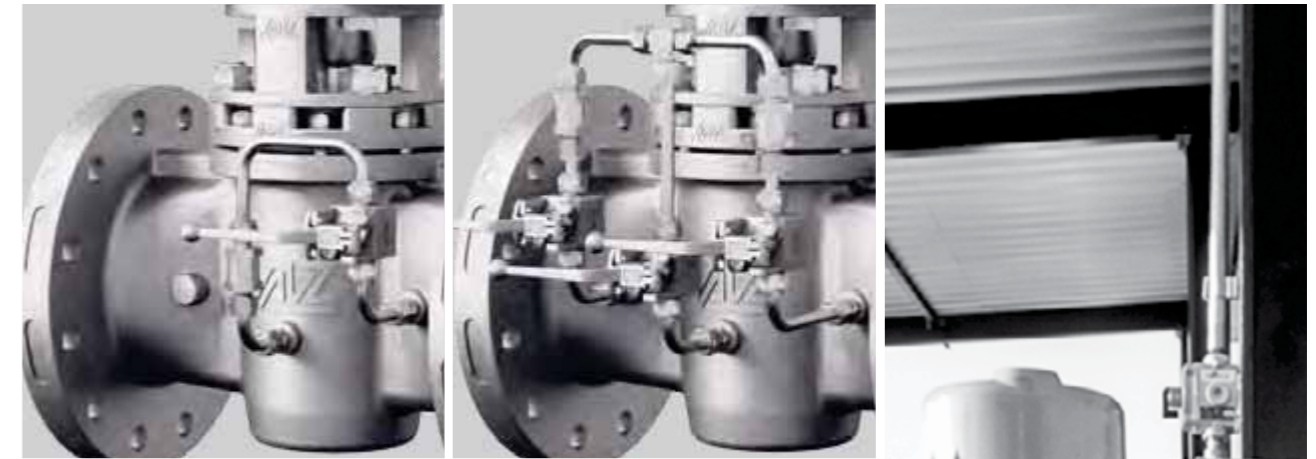
- bleed valve to check tightness when main valve is closed
- bleed outlet standard with "goose neck" pipe
- Accessories
 - manometer/ pressure gauge
 - pressure transmitter
 - valve automation
 - locking device

- bleed valve to check tightness when main valve is closed
- inspection valve for inspection and revision services
- Accessories
 - manometer/pressure gauge
 - pressure transmitter
 - valve automation
 - locking device

- bleed valve to check tightness when main valve is closed
- inspection valve I and II (upstream / downstream) for inspection- and revision services
- Accessories
 - manometer/pressure gauge
 - pressure transmitter
 - valve automation
 - locking device

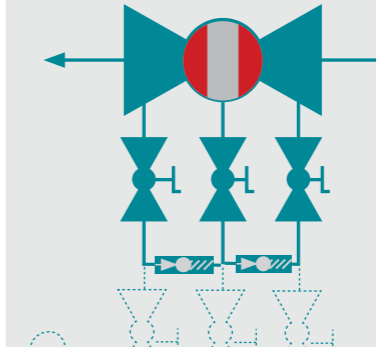
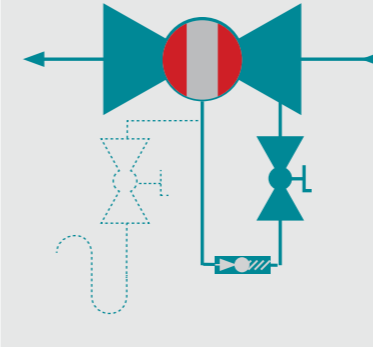
Type DBI

Type overview with thermal relief



Type DBI-TR1

Type DBI-TR2



- thermal relief system to prevent pressure build-up due to thermal expansion in the plug
- isolation valve in case of service
- Accessories
 - bleed valve
 - manometer/pressure gauge
 - pressure transmitter
 - valve automation
 - locking device

- thermal relief system to prevent pressure build-up due to thermal expansion in the plug and downstream pipeline
- isolation valves in case of service
- Accessories
 - bleed valves
 - inspection valves
 - manometer/pressure gauge
 - pressure transmitter
 - valve automation
 - locking device